



Wear-Con,

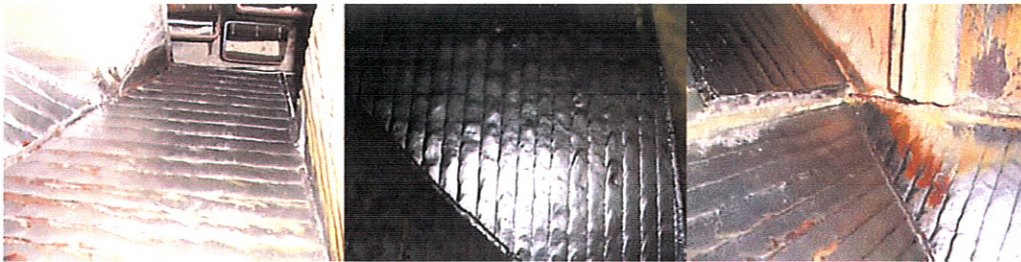
Our process uses industrial silica sand as the main ingredient. Our system runs at a rate of 15 tons per hour. The sand varies in size from 20 mesh to 200 mesh. The plant runs 5 days a week 24 hours per day.

2 years ago we performed a week long shutdown. We hired a local millwright company to install a new bucket elevator and needed feed chute. We would normally have to repair the chute many times a year due to the abrasive nature of sand. We couldn't use a dead bed style chute due to the nature of our process. We asked the local contractor if they had any ideas to help us cut down the constant need to repair the chute. They had used Wear-Con 700 in a local cement mill and found it would stand up to the abrasive cement process. We decided to give it a try.

It has been in our process now for 2 years. Wear-Con 700 has made a believer out of us. The hardened side of the chute still looks brand new. The sand has only shined the chute after 2 years of service. The maintenance department is expecting the chute to easily last 15 years. This chute normally would require repair at least twice per year.

We now consider Wear-Con 700 a good investment and are looking into using Wear-Con in other applications.

Pictures showing wear after 2 years of service



Dave Peterson
Plant Manager
Technisand Inc

Rec'd Feb '07